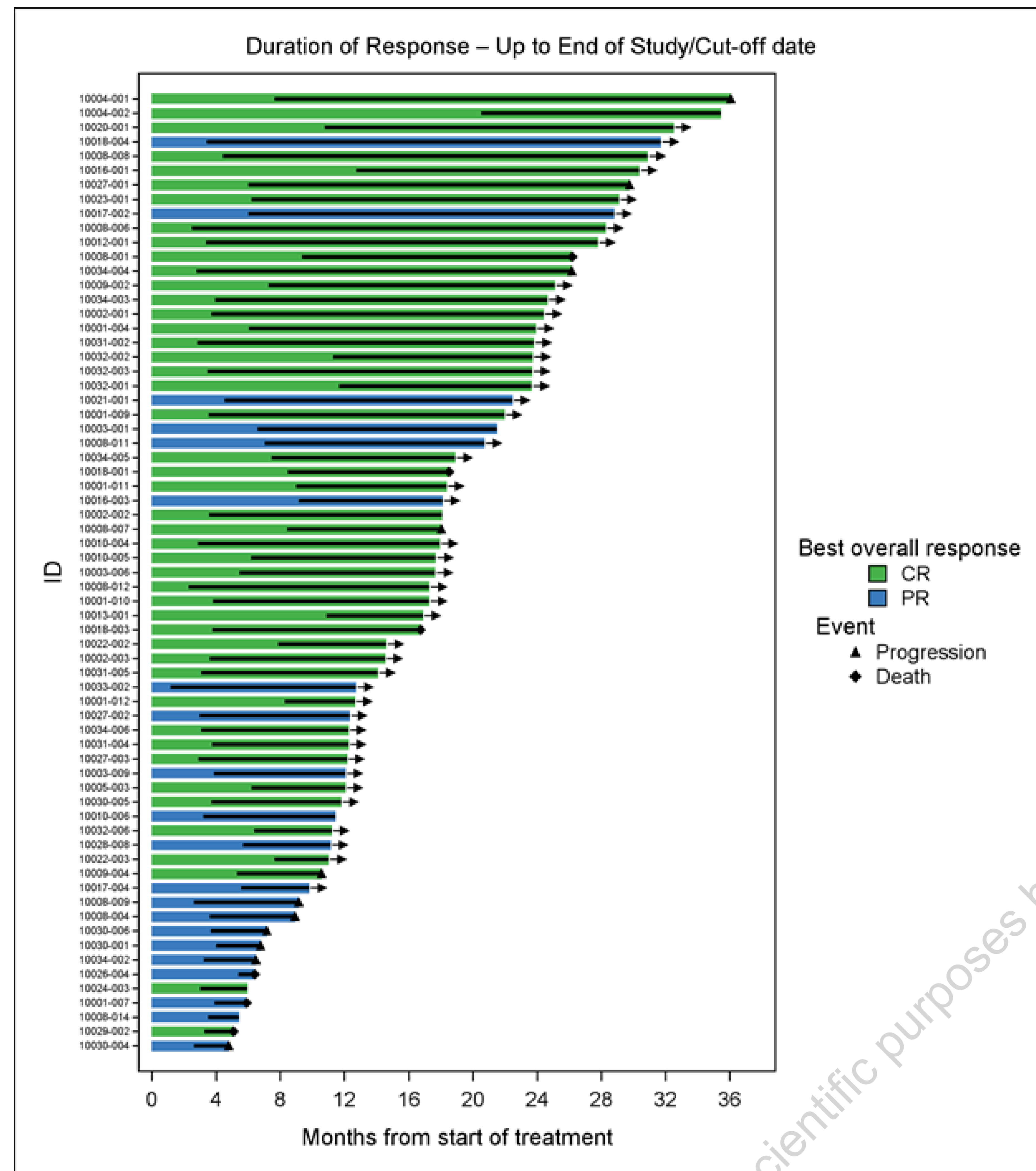


Supplementary data

Figure 3



Note 1: Only subjects with an observed Response (CR or PR) are included.
 Note 2: Black line represents time from first response up until event or censoring (Duration of Response).
 Note 3: Black arrow represents patients in continued follow up for the Duration of Response.
 Abbreviation: MCL = Mantle Cell Lymphoma.
 Source data: Listing 16.2.6.1.3

Table 2

System Organ Class TEAE	TEAE (Total population N=106)	All grades	G3	G4	G5
Infections and infestations (all grades)		25 (23,6%)			
	Pneumonia		3 (2,8%)	-	2 (1,9%)
General disorders and administration site conditions		22 (20,8%)			
	Pyrexia		-	1 (0,9%)	1 (0,9%)*
	Sudden death		-	-	2 (1,9%)
	Unspecified death		-	-	1 (0,9%)
	General physical health deterioration		-	-	1 (0,9%)
Blood and lymphatic system disorders		21 (19,8%)			
	Neutropenia		5 (4,7%)	3 (2,8%)	-
	Anemia		5 (4,7%)	-	-
	Thrombocytopenia		2 (1,9%)	-	-
	Febrile neutropenia		1 (0,9%)	-	-
Gastrointestinal disorders		19 (17,9%)			
	Nausea		-	1 (0,9%)	-
Respiratory, thoracic and mediastinal disorders		18 (17,0%)			
	Pleural effusion		1 (0,9%)	-	-
	Hypoxia		-	-	1 (0,9%)*
Cardiac disorders		16 (15,1%)			
	Atrial fibrillation		3 (2,8%)	-	-
	Cardiac failure		-	-	2 (1,9%)
	Angina pectoris		1 (0,9%)	-	-
	Aortic valve stenosis		-	1 (0,9%)	-
	Cardiac arrest		-	1 (0,9%)	-
	Cardio-respiratory arrest		-	-	1 (0,9%)
	Pericardial effusion		1 (0,9%)	-	-
Skin and subcutaneous tissue disorders		11 (10,4%)			
Injury, poisoning and procedural complications		9 (8,5%)			
Laboratory Investigations		8 (7,5%)			
	Platelet count decreased		1 (0,9%)	1 (0,9%)	-
	Neutrophil count decreased		-	1 (0,9%)	-
Metabolism and nutrition disorders		7 (6,6%)			
	Hyponatraemia		-	1 (0,9%)	-
	Tumour lysis syndrome		-	-	1 (0,9%)
Renal and urinary disorders		4 (3,8%)			
	Acute kidney injury		-	-	1 (0,9%)
	Renal failure		1 (0,9%)	-	-
Musculoskeletal and connective tissue disorders		7 (6,6%)			
	Back pain		1 (0,9%)	-	-
Nervous system disorders		7 (6,6%)			
	Dizziness		-	1 (0,9%)	-
	Somnolence		-	1 (0,9%)	-
Immune system disorders		2 (1,9%)			
	Hypogammaglobulinaemia		1 (0,9%)	-	-

* These events occurred in the same patients



Please scan QR code

<https://www.congresshub.com/EHA2026/Oncology/lbrutinib/Visco>

The QR code is intended to provide scientific information for individual reference, and the information should not be altered or reproduced in any way.

Poster