



WHAT DO THESE RESULTS MEAN FOR INDIVIDUALS WITH NON-SMALL CELL LUNG CANCER (NSCLC)?

Subcutaneous (injected under the skin) amivantamab plus lazertinib, given alongside medications to prevent skin side effects and blood clots, led to fewer side effects compared with earlier studies in individuals with previously untreated NSCLC that had mutations in the *EGFR* gene



WHAT WAS THE PURPOSE OF THIS STUDY?

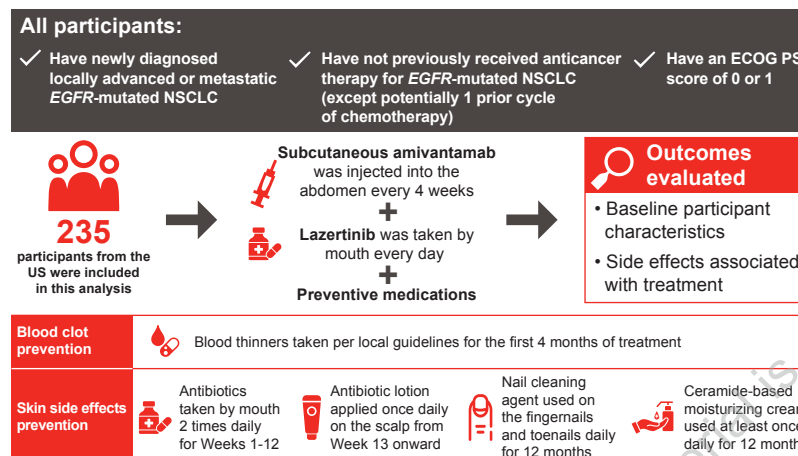
- In this study, researchers aimed to find out how safe and effective subcutaneous amivantamab given every 4 weeks plus lazertinib was as the first treatment for participants with *EGFR*-mutated NSCLC who also received medications to prevent skin side effects and blood clots



WHO WAS IN THE STUDY AND HOW WAS IT CARRIED OUT?

- COPERNICUS (NCT06667076) is a phase 2b study evaluating subcutaneous amivantamab plus lazertinib alongside preventive medications for skin side effects and blood clots in patients with *EGFR*-mutated NSCLC who had no prior anticancer treatment
- The study had a pragmatic design, meaning that researchers worked closely with hospitals and community practices and adjusted some of the study requirements to enroll participants who are more representative of patients in the real world
- As the study is still ongoing, the main goal of this analysis was to look at the side effects of subcutaneous amivantamab plus lazertinib when given alongside preventive medications for skin side effects and blood clots
- Another goal was to present these results alongside those from the MARIPOSA study (NCT04487090) for context only, where participants received intravenous amivantamab with lazertinib without the same preventive medications for skin side effects and blood clots; select side effects are presented for the two studies in all treated participants and in a subset of participants during their first 4 months of treatment

Figure 1: Study design



ECOG PS, Eastern Cooperative Oncology Group performance status; EGFR, epidermal growth factor receptor; NSCLC, non-small cell lung cancer.

COPERNICUS, a pragmatic phase 2b study of first-line subcutaneous amivantamab + lazertinib with supportive care in *EGFR*-mutated advanced NSCLC: Early safety results

Sarah B Goldberg¹, Balazs Halmos², Narjust Florez³, Wade Iams⁴, Kartik Konduri⁵, Xiuning Le⁶, Danny Nguyen⁷, Luis Raez⁸, Jonathan Riess⁹, Joshua Sabari¹⁰, Janet Tu⁶, David Bjork¹¹, Nichelle Stigger¹², Shiven Patel¹³, Annika Hultén¹⁴, Yichuan Xia¹⁵, Paul Cifuentes¹⁶, Farah Shanoon¹⁶, Ilse Leipoldt¹⁷, Ticiana Leal¹⁸

¹Yale School of Medicine, New Haven, CT, USA; ²Montefiore Medical Center/Albert Einstein College of Medicine, Bronx, NY, USA; ³Dana-Farber Cancer Institute, Harvard Medical School, Boston, MA, USA; ⁴Greco-Hainsworth Centers for Research, Tennessee Oncology, Nashville, TN, USA; ⁵SCR1 at Texas Oncology, Dallas, TX, USA; ⁶MD Anderson Cancer Center, The University of Texas, Houston, TX, USA; ⁷City of Hope Orange County Lennar Foundation Cancer Center, Irvine, CA, USA; ⁸Memorial Cancer Institute, Pembroke Pines, FL, USA; ⁹UC Davis Comprehensive Cancer Center, Sacramento, CA, USA; ¹⁰NYU Langone Health, New York, NY, USA; ¹¹The Research Evangelist Podcast, Georgetown, MA, USA; ¹²LUNGEVITY Foundation, Chicago, IL, USA; ¹³Huntsman Cancer Institute – Cancer Hospital South, Salt Lake City, UT, USA; ¹⁴Johnson & Johnson, Espoo, Finland; ¹⁵Johnson & Johnson, Wayne, PA, USA; ¹⁶Johnson & Johnson, Horsham, PA, USA; ¹⁷Johnson & Johnson, Durban North, South Africa; ¹⁸Winship Cancer Institute, Emory University, Atlanta, GA, USA



WHAT WERE THE RESULTS?

The pragmatic study design led to a more diverse population of enrolled participants. The number of administration-related reactions with subcutaneous amivantamab was low, medications for side-effect prevention led to fewer cases of rash and blood clots compared with MARIPOSA,¹ and no new side effects were observed

Figure 2: Participant characteristics

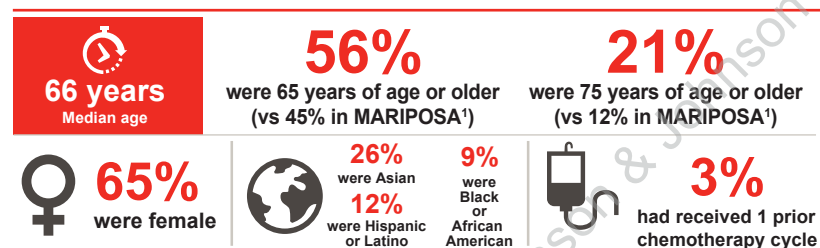
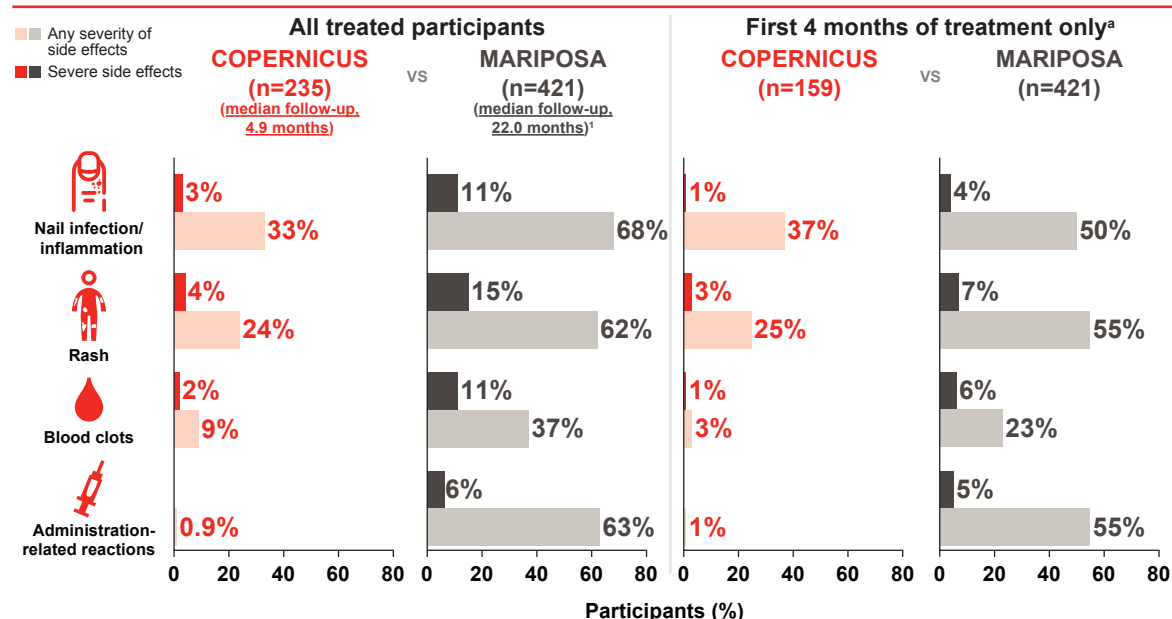


Figure 4: Selected common side effects with subcutaneous amivantamab plus lazertinib

	Fatigue	Nausea	Acne-like skin rash	Sores in the mouth
Any severity	42%	40%	35%	34%
Severe	4%	<1%	4%	3%

	Nail infection/inflammation	Diarrhea	Low albumin in the blood
Any severity	33%	29%	29%
Severe	3%	2%	4%

Figure 3: Side effects in COPERNICUS (with preventive medications) and MARIPOSA (without the same preventive medications)



Glossary of terms

Administration-related reaction	Side effects that occur during or soon after receiving a medication	ECOG PS	A rating scale used to assess the effect a patient's disease has on daily activities; a score of 0 or 1 shows good daily functioning	Median follow-up	The middle amount of time a participant has been assessed after receiving treatment in a study
Locally advanced or metastatic	Cancer that has grown and progressed in one place or spread	EGFR	A protein that relays chemical signals that tell the cell to grow, divide, spread, and survive; mutations in the gene for this protein may lead to cancer	Subcutaneous	Injected under the skin

REFERENCE: 1. Cho BC, et al. *N Engl J Med*. 2024;391(16):1486-1498.



Scan the QR code for the full poster