



WHAT DO THESE RESULTS MEAN FOR INDIVIDUALS WITH NON-SMALL CELL LUNG CANCER (NSCLC)?

Many patients with epidermal growth factor receptor (*EGFR*)-mutant NSCLC who received amivantamab had immunotherapy as their previous treatment, despite not being an effective option for this population. Thus, patients with *EGFR*-mutant NSCLC who are treated with immunotherapy are exposed to unnecessary side effects

Real-World Treatment Patterns Among Patients With Advanced NSCLC Treated With Amivantamab

David Waterhouse¹, Iris Lin², Laura Morrison³, Bruno Emond³, Marie-Hélène Lafeuille³, Yuxi Wang³, Lilian Diaz³, Patrick Lefebvre³, Dexter Waters²

¹Oncology Hematology Care, Cincinnati, OH, USA; ²Johnson & Johnson, Horsham, PA, USA; ³Analysis Group, Inc., Montréal, QC, Canada



WHAT WERE THE RESULTS?

More than half of the patients had previously received immunotherapy, which is a suboptimal treatment for this population. Most patients started amivantamab as monotherapy



WHAT WAS THE PURPOSE OF THIS STUDY?

- This study describes the characteristics and treatment journey of patients receiving amivantamab as a second or later treatment in regular clinical practice



WHO WAS IN THE STUDY AND HOW WAS IT CARRIED OUT?

- Who:** Patients who initiated amivantamab after receiving a prior treatment
- When:** Data time window was 1/1/2016–10/31/2023, during which time amivantamab was approved for *EGFR* exon 20 insertion-mutated NSCLC after chemotherapy (approval date, 5/21/2021)
- How:** Retrospective cohort study of insurance claims

Figure 1: Study design and patient characteristics

All patients:

- ✓ ≥18 years of age
- ✓ Had diagnosis of NSCLC
- ✓ Received amivantamab after ≥1 prior treatment for NSCLC

126 patients were included

Number of NSCLC treatments before amivantamab

1	51.6%	2	32.5%
≥3		15.9%	



Median age
60.2 years



63.5% were female



30.2% had their cancer spread to the brain before amivantamab

NSCLC, non-small cell lung cancer.

Figure 2: Treatments received prior to amivantamab

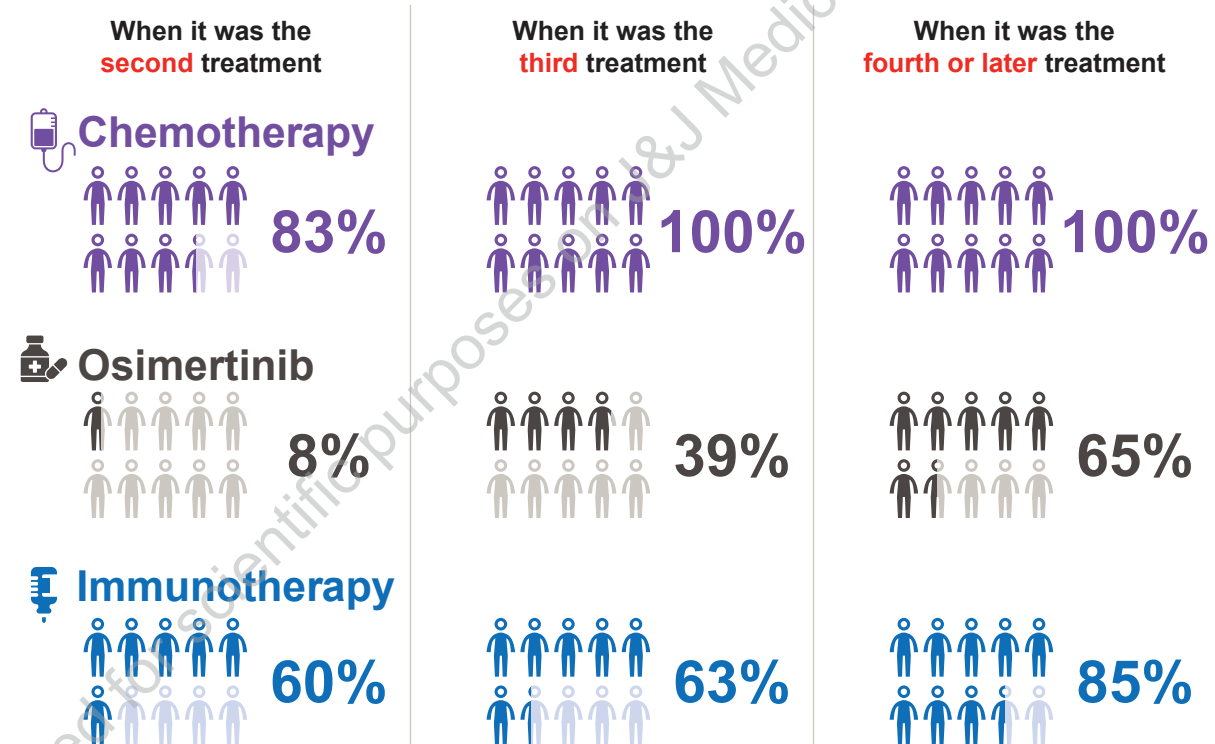
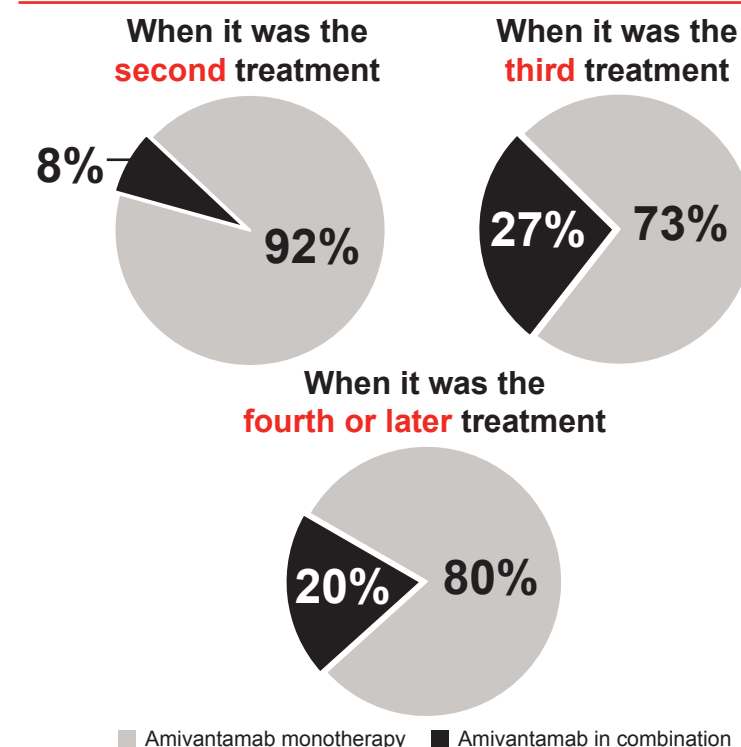


Figure 3: Use of amivantamab



Glossary of terms

EGFR mutation	EGFR is a protein that relays chemical signals that tell the cell to grow, divide, or survive. Mutations in the <i>EGFR</i> gene are common in NSCLC and can affect how the cancer responds to treatment	Immunotherapy	A type of treatment that helps the immune system fight cancer	Monotherapy	A treatment given on its own (vs in combination)
----------------------	----------------------------------------------------------------------------------------------------------------------------------------------------------------------------------------------------------	----------------------	---------------------------------------------------------------	--------------------	--------------------------------------------------



Scan the QR code for the full poster