

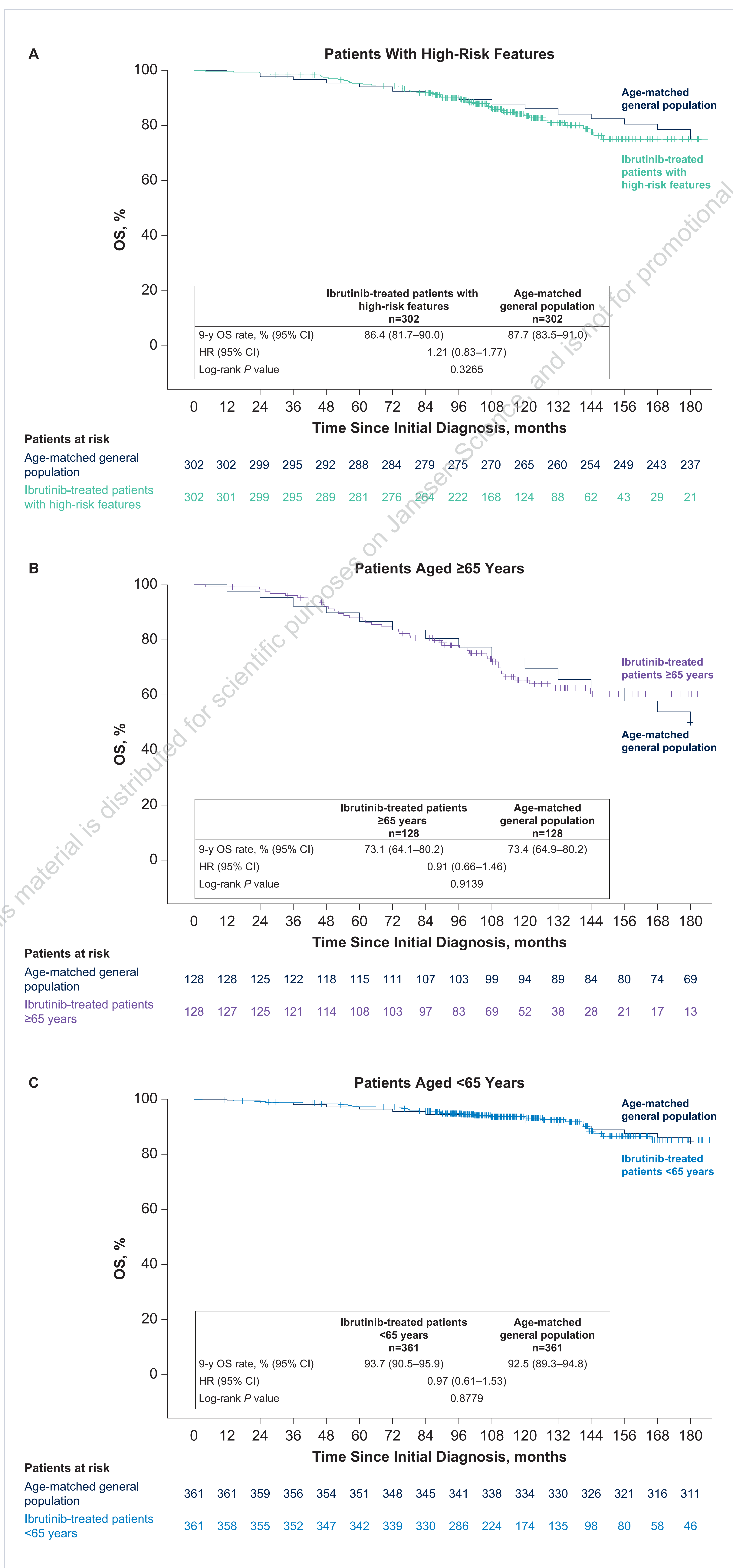
Treatment With First-Line Ibrutinib Improves Overall Survival in Patients With Chronic Lymphocytic Leukemia and High-Risk Genomic Features to Rates Approximating an Age-Matched US Population: Pooled Analysis of Phase 3 Trials With 10 Years of Follow-Up

Jan A. Burger, MD, PhD,¹ Neil E. Kay, MD,² John N. Allan, MD,³ Paul M. Barr, MD,⁴ Jacqueline C. Barrientos, MD, MS,⁵ Carolyn Owen, MD,⁶ Victoria Wang, PhD,⁷ Hsin-Hui Huang, MD, PhD,⁸ Lynne Neumayr, MD,⁸ Christopher Abbazio, PharmD,⁸ Gabriel Krigsfeld, PhD,⁸ Sneh Mody, PharmD,⁸ Paolo Ghia, MD, PhD,^{9,10} Tait Shanafelt, MD¹¹

¹Department of Leukemia, The University of Texas MD Anderson Cancer Center, Houston, TX, USA; ²Mayo Clinic, Rochester, MN, USA; ³Weill Cornell Medicine, New York, NY, USA; ⁴Wilmot Cancer Institute, University of Rochester Medical Center, Rochester, NY, USA; ⁵Mount Sinai Comprehensive Cancer Center, Miami Beach, FL, USA; ⁶University of Calgary, Calgary, AB, Canada; ⁷Dana-Farber Cancer Institute, Boston, MA, USA; ⁸AbbVie, North Chicago, IL, USA; ⁹Università Vita-Salute San Raffaele, Milan, Italy; ¹⁰RCCS Ospedale San Raffaele, Milan, Italy; ¹¹Stanford University Medical Center, Stanford, CA, USA

SUPPLEMENTAL INFORMATION

Estimated OS From Initial Diagnosis in Ibrutinib-Treated Patients Was Similar to That of an Age-Matched General Population Irrespective of High-Risk Features^a or Age



HR, hazard ratio; OS, overall survival.

^aDefined as those with del(11q), del(17p), mutated *TP53*, and/or unmutated *IGHV*.