

# Efficacy of Lumateperone 42 mg for the Treatment of Major Depressive Disorder: Analysis of Demographic and Clinical Subgroups in a Phase 3 Randomized Placebo-Controlled Trial

Suresh Durgam, MD<sup>1</sup>; Willie R. Earley, MD<sup>2</sup>; Dennis Sholler, PhD<sup>2</sup>; Hassan Lakkis, PhD<sup>2</sup>; Roger S. McIntyre, MD<sup>3,4</sup>; Maurizio Fava, MD<sup>5</sup>

<sup>1</sup>Former employee of Intra-Cellular Therapies, a Johnson & Johnson company, Bedminster, NJ, USA; <sup>2</sup>Intra-Cellular Therapies, a Johnson & Johnson company, Bedminster, NJ, USA; <sup>3</sup>Department of Psychiatry, University of Toronto, Toronto, ON, Canada; <sup>4</sup>Department of Pharmacology and Toxicology, University of Toronto, Toronto, ON, Canada; <sup>5</sup>Massachusetts General Hospital and Harvard Medical School, Boston, MA, USA

## Background

- Major depressive disorder (MDD) is a complex mental illness with varying clinical presentations and treatment responses<sup>1-3</sup>
- Demographic and clinical characteristics can influence treatment outcomes in patients with MDD, making it essential to evaluate treatment efficacy in distinct subgroups to establish consistency of treatment effect<sup>12</sup>
- Lumateperone is a mechanistically novel US Food and Drug Administration-approved antipsychotic to treat adults with schizophrenia and depressive episodes associated with bipolar I or bipolar II disorder as monotherapy and as adjunctive therapy with lithium or valproate, and adjunct to antidepressant therapy (ADT) for MDD<sup>4</sup>
  - Lumateperone is a simultaneous modulator of serotonin, dopamine, and glutamate neurotransmission<sup>5</sup>
  - Specifically, lumateperone is a potent serotonin 5-HT<sub>2A</sub> receptor antagonist, a dopamine D<sub>2</sub> receptor presynaptic partial agonist and postsynaptic antagonist, a D<sub>1</sub> receptor-dependent indirect modulator of AMPA and NMDA currents, and a serotonin reuptake inhibitor<sup>6</sup>
  - This novel mechanism of action with multimodal effects may confer robust efficacy with improved tolerability compared with current treatment options
- The efficacy and safety of lumateperone 42 mg adjunctive to ADT were established in 2 Phase 3 randomized, double-blind, placebo-controlled trials (Study 501 [NCT04985942] and Study 502 [NCT05061706]) in patients with MDD with inadequate ADT response<sup>6-9</sup>
  - In both studies, lumateperone 42 mg + ADT met the primary and key secondary endpoints, showing significant improvement vs placebo + ADT at Day 43 on both the Montgomery-Åsberg Depression Rating Scale (MADRS) Total score and Clinical Global Impression-Severity (CGI-S) score, and was generally well tolerated<sup>10</sup>

## Methods

- Study 501 enrolled eligible adults (18-65 years) who met DSM-5 criteria for MDD with inadequate response to 1-2 courses of ADT in the current depressive episode, defined as <50% improvement on the Antidepressant Treatment Response Questionnaire
  - Patients were experiencing a major depressive episode (MADRS Total score ≥24 and CGI-S score ≥4) and had Quick Inventory of Depressive Symptomatology-Self Report-16 (QIDS-SR-16) item score ≥14 at screening and baseline
- Patients were randomized 1:1 to 6-week, oral lumateperone 42 mg/day + ADT or placebo + ADT
- The primary and key secondary endpoints were the changes from baseline to Day 43 in MADRS Total score and CGI-S score, respectively
- MADRS response and remission, as well as change from baseline to Day 43 in patient-rated scales for depression (QIDS-SR-16 Total score, range from 0 to 27; higher scores indicating more severe depression<sup>10</sup>), were also assessed
- Efficacy was evaluated in the overall population and in patient subgroups by demographic and baseline disease characteristics using a mixed-effects model for repeated measures (MMRM) or analysis of covariance (Box 1)

### Box 1. Demographic and Baseline Disease Characteristic Subgroups

Demographic subgroups	Baseline disease characteristic subgroups
• Age: ≤40 or >40 years	• Disease severity
• Sex: male or female	• Type of ADT
• Race: White or non-White	• Number of ADT failures in the current episode
• Ethnicity: Hispanic/Latino or not Hispanic/Latino	• Presence/absence of DSM-5-defined anxious distress
• Region: US or non-US	

ADT, antidepressant therapy; DSM-5, Diagnostic and Statistical Manual of Mental Disorders, Fifth Edition.

## Results

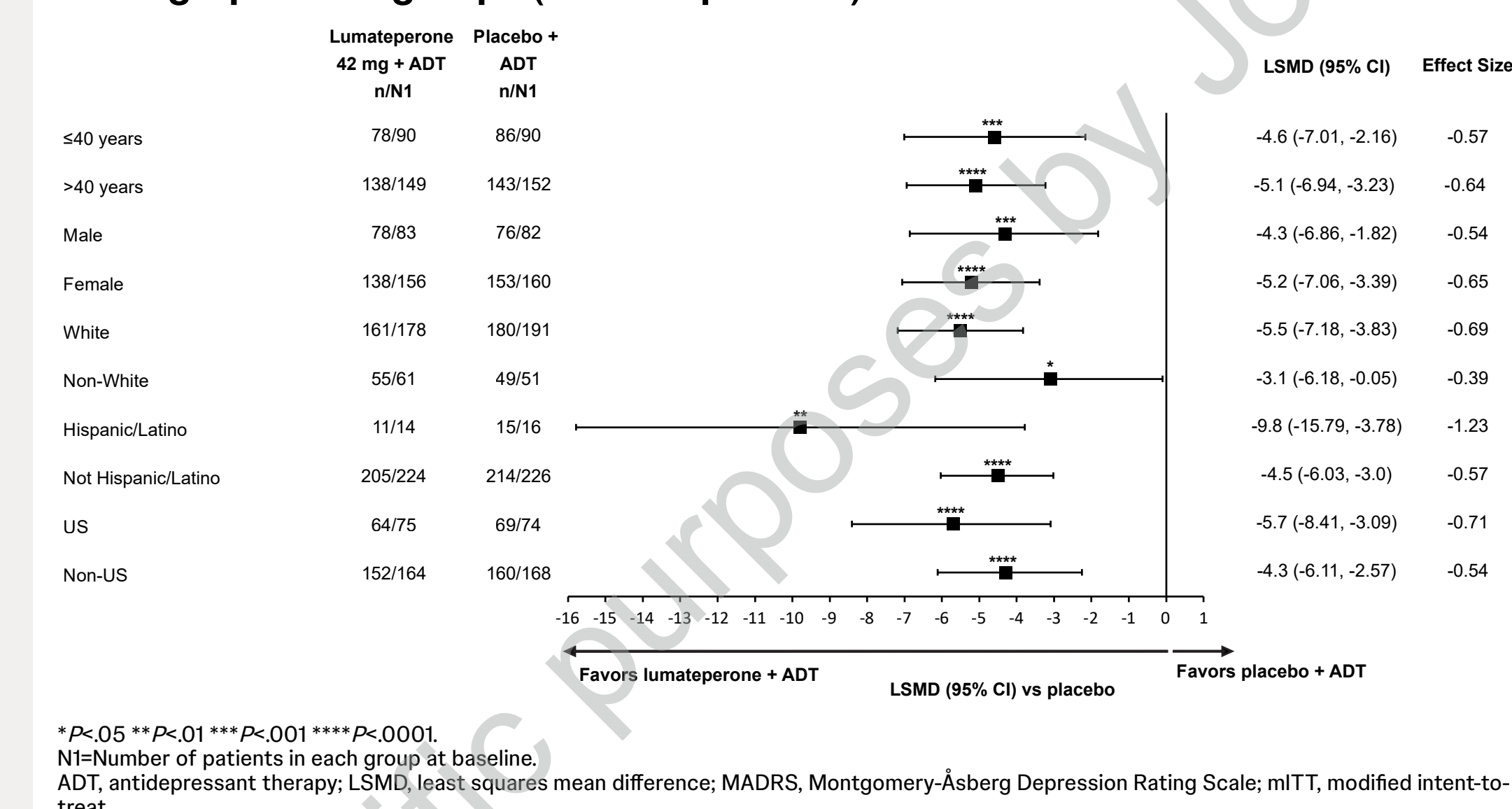
### Patient Population

- The modified intent-to-treat (mITT) population comprised 481 patients (lumateperone + ADT, n=239; placebo + ADT, n=242)
- Baseline demographics and clinical characteristics were similar between groups
  - The mean age of patients was 45 years
  - Most patients were White (76.7%) and female (65.7%)

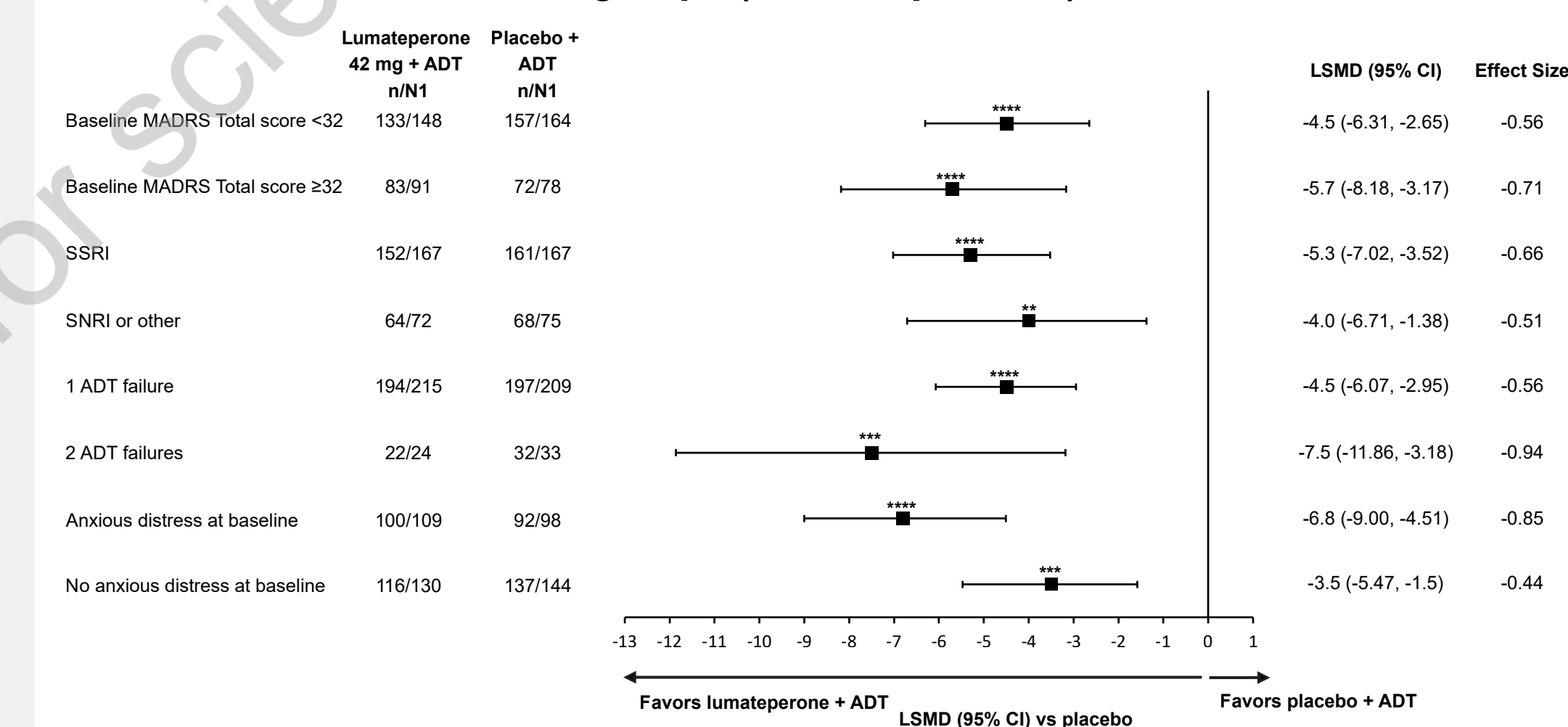
### Efficacy

- The primary endpoint was met for lumateperone + ADT, with significantly greater MADRS Total score improvement from baseline to Day 43 vs placebo + ADT in the mITT population (least squares mean difference vs placebo [LSMD], -4.9; effect size [ES], -0.61; P<.0001)
- Lumateperone + ADT significantly improved CGI-S score (LSMD, -0.7; ES, -0.67; P<.0001) from baseline to Day 43 vs placebo + ADT in the mITT population
- Lumateperone + ADT significantly improved self-reported depressive symptoms at Day 43 vs placebo + ADT, as measured by QIDS-SR-16 Total score (LSMD, -2.4; P<.0001) in the ITT population
- Consistent improvement in MADRS Total score at Day 43 with lumateperone + ADT vs placebo + ADT was observed in all demographic subgroups assessed (age, sex, race group, ethnicity, and region) (Figure 1A)
- Lumateperone + ADT significantly improved MADRS Total score from baseline to Day 43 irrespective of baseline disease characteristics (disease severity, type of ADT, number of ADT failures in the current episode, and presence/absence of anxious distress) (Figure 1B)

**Figure 1A. Change from Baseline to Day 43 in MADRS Total Score Among Demographic Subgroups (mITT Population)**



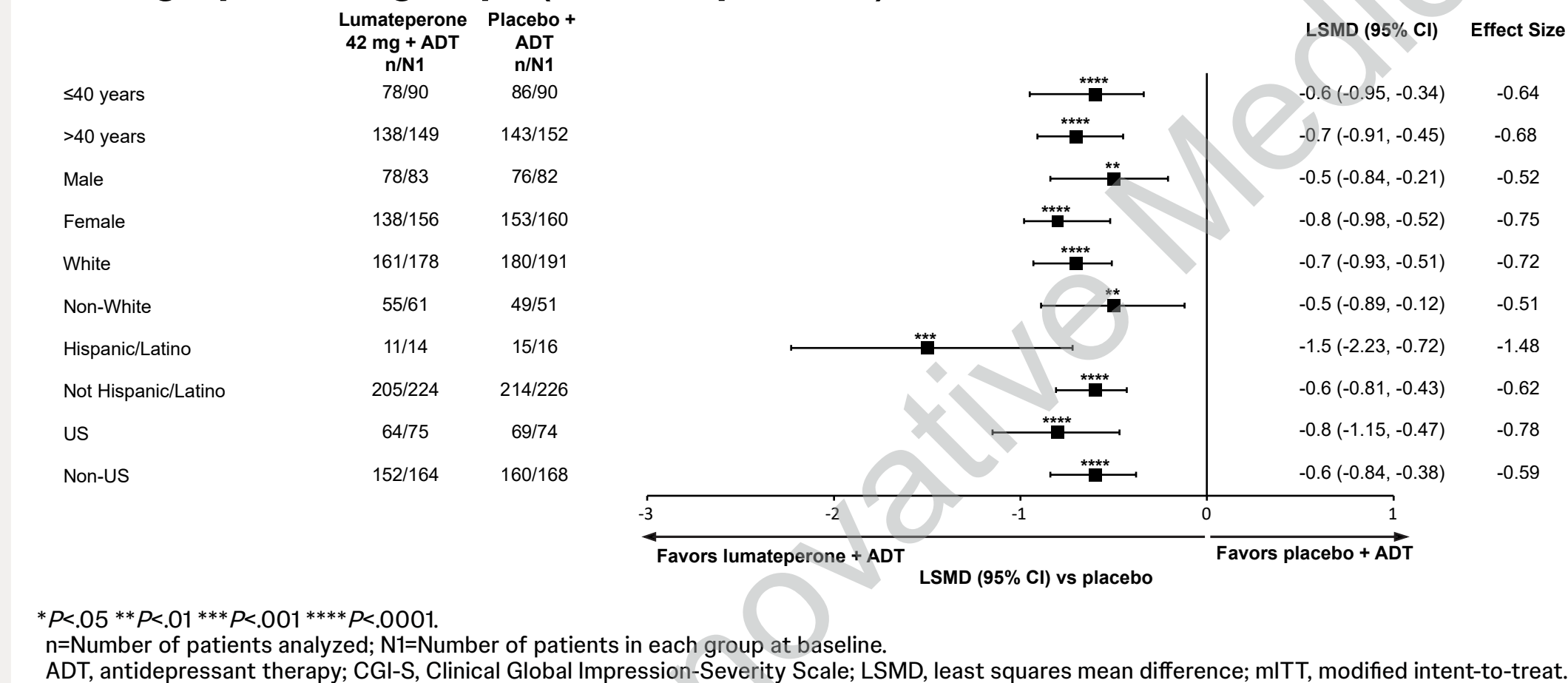
**Figure 1B. Change from Baseline to Day 43 in MADRS Total Score Among Disease Characteristic Subgroups (mITT Population)**



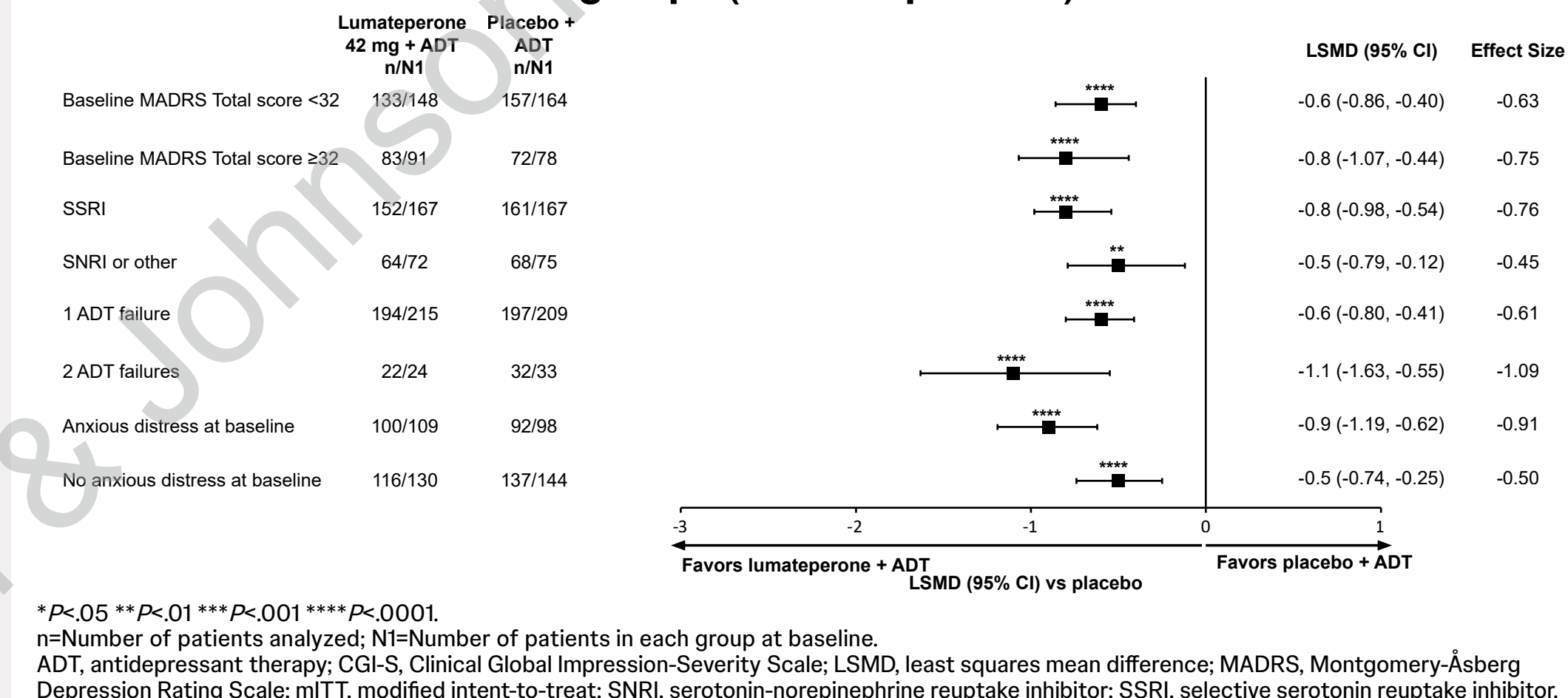
\*P<.05 \*\*P<.01 \*\*\*P<.001 \*\*\*\*P<.0001  
n=Number of patients analyzed; N=Number of patients in each group at baseline.  
ADT, antidepressant therapy; LSMD, least squares mean difference; MADRS, Montgomery-Åsberg Depression Rating Scale; mITT, modified intent-to-treat; SNRI, serotonin-norepinephrine reuptake inhibitor; SSRI, selective serotonin reuptake inhibitor.

- Treatment with lumateperone + ADT consistently led to statistically significant improvements (P<.05) in CGI-S score vs placebo + ADT from baseline to Day 43 across all patient subgroups, independent of age, sex, race, ethnicity, geographic region, baseline severity, ADT type, number of prior ADT failures in the current episode, or baseline anxious distress (Figures 2A and 2B)

**Figure 2A. Change from Baseline to Day 43 in CGI-S Score Among Demographic Subgroups (mITT Population)**

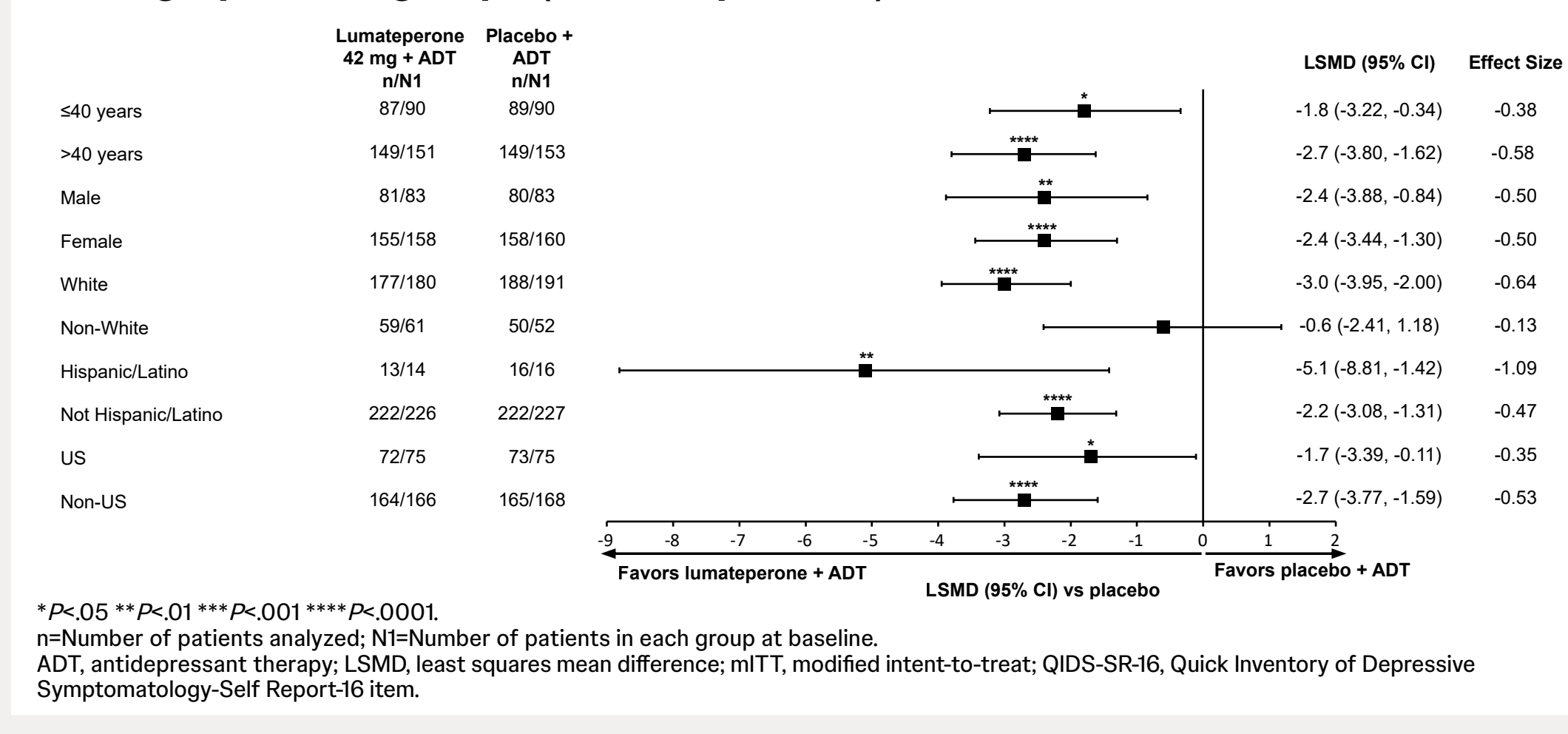


**Figure 2B. Change from Baseline to Day 43 in CGI-S Score Among Disease Characteristic Subgroups (mITT Population)**

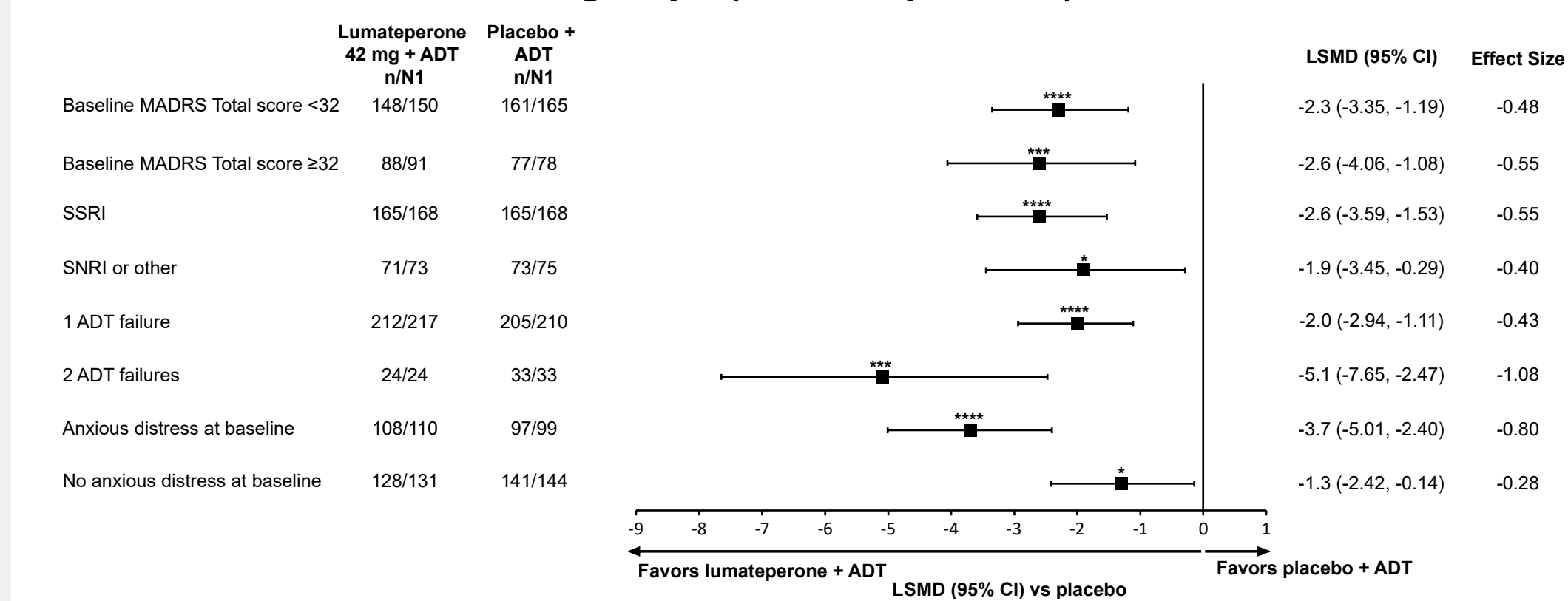


\*P<.05 \*\*P<.01 \*\*\*P<.001 \*\*\*\*P<.0001  
n=Number of patients analyzed; N=Number of patients in each group at baseline.  
ADT, antidepressant therapy; CGI-S, Clinical Global Impression-Severity Scale; LSMD, least squares mean difference; MADRS, Montgomery-Åsberg Depression Rating Scale; mITT, modified intent-to-treat; SNRI, serotonin-norepinephrine reuptake inhibitor; SSRI, selective serotonin reuptake inhibitor.

**Figure 3A. Change from Baseline to Day 43 in QIDS-SR-16 Total Score Among Demographic Subgroups (mITT Population)**



**Figure 3B. Change from Baseline to Day 43 in QIDS-SR-16 Total Score Among Disease Characteristic Subgroups (mITT Population)**



\*P<.05 \*\*P<.01 \*\*\*P<.001 \*\*\*\*P<.0001  
n=Number of patients analyzed; N=Number of patients in each group at baseline.  
ADT, antidepressant therapy; LSMD, least squares mean difference; MADRS, Montgomery-Åsberg Depression Rating Scale; mITT, modified intent-to-treat; QIDS-SR-16, Quick Inventory of Depressive Symptomatology-Self Report-16 item; SNRI, serotonin-norepinephrine reuptake inhibitor; SSRI, selective serotonin reuptake inhibitor.

- Treatment with lumateperone + ADT consistently led to statistically significant improvements (P<.05) in MADRS response at Day 43 vs placebo + ADT in all patient subgroups, except for race (White, P<.0001; non-White, P=.2660) and ethnicity (Hispanic/Latino, P=.0938; not Hispanic/Latino, P<.0001)
- Treatment with lumateperone + ADT consistently led to statistically significant improvements (P<.05) in MADRS remission at Day 43 vs placebo + ADT across subgroups for age, sex, region, disease severity, and presence/absence of anxious distress, but not for race (White, P=.0002; non-White, P=.7936), ethnicity (Hispanic/Latino, P=.1009; not Hispanic/Latino, P=.0028), type of ADT (SNRI/other, P=.3141; SSRI, P=.0010), or number of ADT failures in the current episode (2 failures, P=.2127; 1 failure, P=.0023)

## Conclusions



Lumateperone 42 mg adjunctive to ADT demonstrated consistent and clinically meaningful improvements over placebo adjunctive to ADT across demographic and disease characteristic subgroups of patients with MDD enrolled in Study 501



These results highlight lumateperone as a promising adjunctive treatment option for patients with MDD with inadequate ADT response

## Acknowledgments

The authors thank all study investigators, research staff, and patients for their participation. Medical writing support was provided by Emily Smith of Nucleus Global, an Inizio company, funded by Intra-Cellular Therapies, a Johnson & Johnson company.

## Disclosures

S Durgam is a former employee of Intra-Cellular Therapies, a Johnson & Johnson company.

WR Earley, D Sholler, and H Lakkis are full-time employees of Intra-Cellular Therapies, a Johnson & Johnson company. RS McIntyre has received research grant support from CIHR/GACD/National Natural Science Foundation of China (NSFC) and the Milken Institute; speaker/consultation fees from Lundbeck, Janssen, Alkermes, Neumora Therapeutics, Boehringer Ingelheim, Sage, Biogen, Mitsubishi Tanabe, Purdue, Pfizer, Otsuka, Takeda, Neurocrine, Neurawell, Sunovion, Bausch Health, Axsome, Novo Nordisk, Kris Pharma, Sanofi, Eisai, Intra-Cellular Therapies, NewBridge Pharmaceuticals, Viatris, AbbVie, and Atai Life Sciences.

M Fava reports the following disclosures related to the last 3 years: Research Support: AbbVie; Acadia Pharmaceuticals; Aditum Bio Management Company, LLC; Allergan, Alkermes, Inc.; Altimate Health Corporation; Alto Neuroscience, Inc.; Ancora Bio, Inc.; Angelini S.p.A.; Aptinyx; Arbor Pharmaceuticals LLC; Avani Pharmaceuticals Inc.; Axsome; Benckiser Pharmaceuticals, Inc.; BioClinica, Inc.; Biogen; BioHaven; BioShin Limited; Cambridge Science Corporation; Centrex Therapeutics Corporation; Cerecor; Cybin IRL Limited; Damona Pharmaceuticals; EmbarkNeuro; Eliem Therapeutics LTD; Gate Neurosciences, Inc.; GenOmind, LLC; Gentelon, LLC; Gerbera Therapeutics, Inc.; Happify; Johnson & Johnson; Lundbeck Inc.; Marinus Pharmaceuticals; Medpace, Inc.; Methylation Sciences, Inc.; Millennium Pharmaceuticals, Inc.; Minerva Neurosciences; Neuralstem; Neurocrine Biosciences, Inc.; NeuroRX Inc.; Novaremed; Novartis; Otsuka; Pfizer; Premier Research International; Praxis Precision Medicines; Protogen Therapeutics, Inc.; Relmada Therapeutics Inc.; Reckitt; Shenox Pharmaceuticals; Stanley Medical Research Institute (SMRI); Taisho; Takeda; University of Michigan; Vistagen; WinSanTor, Inc.; Xenon Pharmaceuticals, Inc.; National Institute of Drug Abuse (NIDA); National Institutes of Health (NIH); National Institute of Mental Health (NIMH); and PCORI. M Fava has not done any personal consulting. Any consulting he has done has been on behalf of Massachusetts General Hospital, except for Revival Therapeutics and Sensorium Therapeutics. Speaking/Publishing: Lecture given at Global Medical Education, Inc. Mood Disorders Summit, November 2020. Stock/Other Financial Options: Equity Holdings: Compellis; Neuronix; Psy Therapeutics; Revival Therapeutics; Sensorium Therapeutics. Royalty/patent, other income: Patents for Sequential Parallel Comparison Design (SPCD), licensed by MGH to Pharmaceutical Product Development, LLC (PPD) (US\_7840419, US\_7647235, US\_7983936, US\_8145504, US\_8145505); and patent application for a combination of Ketamine plus Scopolamine in Major Depressive Disorder (MDD), licensed by MGH to Biohaven. Patents for pharmacogenomics of Depression Treatment with Folate (US\_9546401, US\_9540691). Copyright for the MGH Cognitive & Physical Functioning Questionnaire (CPFQ), Sexual Functioning Inventory (SFI), Antidepressant Treatment Response Questionnaire (ATRQ), Discontinuation-Emergent Signs & Symptoms (DESS), Symptoms of Depression Questionnaire (SDQ), and SAFER; Belvoir; Lippincott, Williams & Wilkins; Wolters Kluwer; World Scientific Publishing Co. Pte. Ltd.

## Neuropsychiatry



## Scan the QR code

The QR code is intended to provide scientific information for individual reference, and the information should not be altered or reproduced in any way.

## References

- Perna G, et al. *Psychiatry Investig*. 2020;17:193-206; 2. Niesta R, et al. *Sci Rep*. 2018;8:5530; 3. Marx W, et al. *Nat Rev Dis Primers*. 2023;9:44; 4. Caplyta. Prescribing information. Intra-Cellular Therapies, Inc.;2026; 5. Titulaer J, et al. *Eur Neuropsychopharmacol*. 2022;62:22-35; 6. Durgam S, et al. *J Clin Psychiatry*. 2025;86:25m15848; 7. Durgam S, et al. *Am J Psychiatry*. 2025;182(12):1072-1082; 8. ClinicalTrials.gov. Study NCT04985942. <https://clinicaltrials.gov/study/NCT04985942> (Accessed October 1, 2025); 9. ClinicalTrials.gov. Study NCT05061706. <https://clinicaltrials.gov/study/NCT05061706> (Accessed October 1, 2025); 10. Rush J, et al. *Biol Psychiatry*. 2003;54:573-583.